

J E T L I N E®

EFOR JT-01

VACUUM CLEANER

USER MANUAL

AND

WARRANTY



Please read the user manual carefully.

Dear Jetline customer;

The vacuum cleaner you have purchased is entirely designed and
manufactured in Turkey
and is a patented product for both its design and technology.

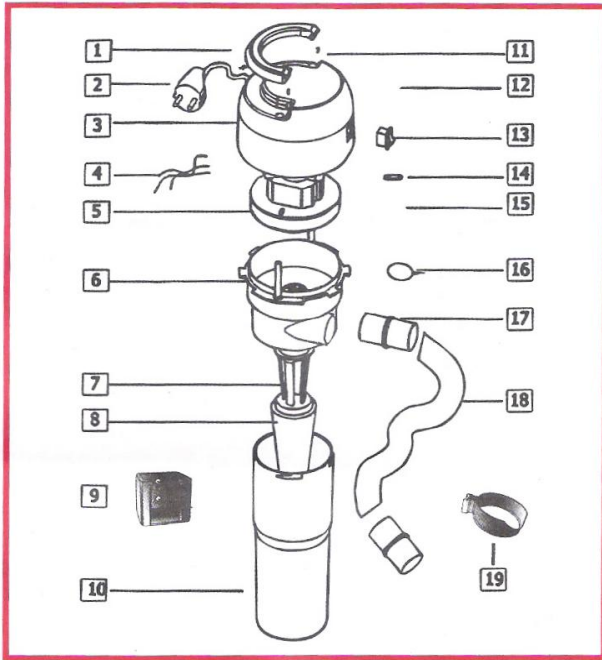
We congratulate you for choosing our product.

Patent No: PT 2007 / 01393 - TT 2007 / 1197

www.genthem.com



JETLINE VACUUM CLEANER EXPLODED VIEW



- | | | | |
|----|------------------------------|-----|------------------------------|
| 1. | HANDLE | 10. | Dust Compartment |
| 2. | Plug & Cord | 11. | HANDLE Screws |
| 3. | Top Cover | 12. | Rubber Grommet |
| 4. | Internal Cord with Capacitor | 13. | ON/OFF Switch |
| 5. | Motor | 14. | Motor Chamber Sealing Rubber |
| 6. | Bottom Casing | 15. | Screws |
| 7. | Filter Holder | 16. | Cord Fixer |
| 8. | Fabric Filter | 17. | Hose Inlet Nozzle |
| 9. | Wall Fixer | 18. | Extensible Hose |
| | | 19. | Ring Shaped Holder |

BEFORE FIRST TIME USE

Install the wall fixer of your vacuum cleaner on a wall preferably in your kitchen or inside a cabinet using the screws and wall plugs as shown in Figure 1. This is a prerequisite that must be done to enable the use of patented extensible hose feature of your vacuum cleaner. (Figure 1)

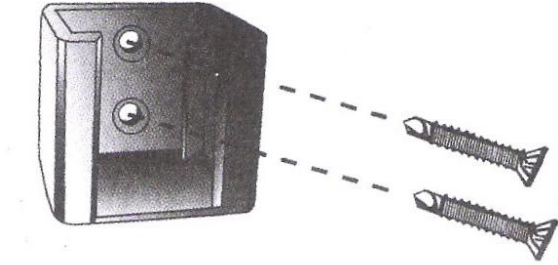


Figure 1

The product is supplied with 2 extension wands out-of-the-box. To make ready for use, combine these two wands by interlocking one inside another with the wand having the fixing ring to be the upper one (Figure 2)

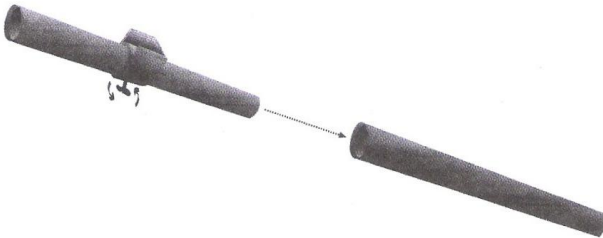


Figure 2

You can fix your vacuum cleaner on the wall by inserting through the black, ring shaped holder or you can attach the cleaner on the suction wand and use in your hand just as portable, upright type vacuum cleaners. (Figure 3a and Figure 3b)

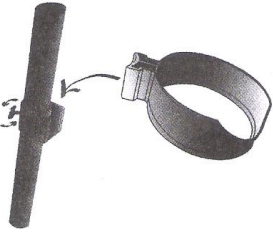


Figure 3a

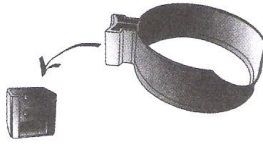


Figure 3b

Dusting Nozzle

This is a tool to be used only when your vacuum cleaner is fixed to the wall. It is used for bright surfaces like desktops, countertops. Do not use directly on floors. It is directly attached to the connection end of the extensible hose. Not to be used with suction wand.



Picture 1

Universal Floor Tool

Used for effective vacuuming on all types of floors, carpets, floor tiles, spaces under furniture, etc. Before use attach the elbow shaped tool directly to the end of the extensible hose. Then attach the suction wands to the elbow and finally attach the Universal Floor Tool to the end of the wand.



Picture 2

SAFETY GUIDELINES

- JetLine has been manufactured in accordance with up-to-date safety guidelines and technical standards.
- Make sure to use your appliance at the correct voltage and frequency specified on the rating label. (220 Volts, 50 Hz)
- Make sure that the filter is in place. Never use the cleaner without filter.
- Keep electrical household appliances away from the reach of children.
- Do not approach suction pipe to eyes or ears.
- Your vacuum cleaner is exclusively designed cleaning dry surfaces. Do not use for vacuuming hot substances, acids; flammable, explosive, dissolvent, corrosive substances.

Important Instructions Which Must Be Observed

- JetLine is a dry-vac type vacuum cleaner and should never be used for vacuuming liquid substances like water, alcohol, acid etc.
- Use of the device for vacuuming semi-fluids like jam, honey, marmalade and highly viscous substances including dough, mortar, pitch, tar and alike will invalidate the product warranty.
- The cleaner should never be operated with motor protection filter. If operated without the filter the particles building up on the suction fins of the motor will cause the motor to get overheated and burn down. Such an operation will invalidate the product warranty. Wash your filter periodically.(Explained in detail below)
- JetLine MUST BE OPERATED VERTICALLY either attached to the wall fixer or attached to the suction wand in upright position. Never operate your vacuum cleaner in a tilted position.

Features Of Your Vacuum Cleaner

The most important feature of your vacuum cleaner is the cyclone technology. With this technology;

- Dusts drawn into the dust compartment are compacted by continuous rotation which reduces their volume. This feature reduces the dust build up on the fabric filter covering cyclonic center.
- Inlet cooling air rate into your motor is not drastically reduced in time. This feature extends the lifespan of your motor.

- Since the dust will build up at the bottom at all times discharging dust compartment will not cause dusts scatter in the air.
- Greatly reduced volume of your vacuum cleaner reduces the storage space need at your home.
- Ultra high vacuum power (1550 mmSS)
- Zero-leak suction (without air escape) from the surface cleaned to the cleaner inlet. First of its breed vacuum cleaner of Turkey.
- Jetline is most lightweight vacuum cleaner of Turkey. It can be easily carried.

After Using

Turn the cleaner off by pressing the ON/OFF switch, and unplug the cleaner.

CLEANING AND MAINTENANCE

JetLine is the only vacuum cleaner fitted with polypropylene filter in Turkey. This feature enables the filter to be washed anytime needed. Another feature of your filter is its resistance to build up of harmful microorganisms like bacteria, mites. Your filter has been particularly manufactured from white fabric. When the color of your filter changes or when you see too much soil build up dismantle the filter by holding from the bottom and wash under flowing water. You can use liquid soap as you wish. After washing press your filter with your hands to rinse out the excess water and let it dry. Special attention should be paid not to reinstall the filter before it completely dries. Even residual dampness on the filter causes a significant loss on the suction power. Never remove your filter by pulling from the edges. When dismantling make sure to hold the filter from where it contacts with the casing and rotate the filter to dismantle with its framing. Do not try to remove your filter out of its special framing. Furthermore, your filter should never be contacted with chemical agents like detergents or bleach. Your filter will serve for an extended period without replacing, as long as you follow the cleaning and usage instructions. In case you wish to replace your filter please consult to JetLine authorized service spots for original filters.

- You can wipe the colored casing with a damp cloth
- You can wash the transparent dust compartment. Do not reinstall before it completely dries.

IF YOUR VACUUM CLEANER LOSES SUCTION POWER

- Check if the transparent plastic compartment is tightly fixed. Loose fixing will cause the LOSS OF EFFICIENCY as the motor will apply suction power to both in and out of the compartment.

- The fabric motor protection filter should be checked to ensure cleanliness. A soiled filter should be cleaned as described above. A Clogged filter will cause loss of suction power.
- Check the extensible hose for ruptures or tears.
- A rather little possibility is that the extensible hose may have been set apart from the connection to the black plastic adapter. Such a separation WILL REDUCE THE SUCTION POWER.

Unplug the cleaner on following instances

- If the motor overheats. Unplug the cleaner and clean the filter. Also check the suction wands and the extensible hose to make sure that they are not clogged.
- If the cleaner operates with interruptions
- After using.
- Before installing/replacing accessories.

CAUTION:

If your vacuum cleaner loses suction, starts noisy or interrupted operation the wands, hose or other parts might be blocked or damaged or the filter may have been clogged.

WARRANTY TERMS & CONDITIONS

- 1- Warranty Period: 2 year (two) warranty period starts on the delivery date of the item to the end user.
- 2- This warranty covers the entire product and any and all parts of it.
- 3- The duration in which the product is retained in service for any failures of the item occurring within the warranty period shall be added on the warranty period. The maximum retention period for repairs is 30 workdays. The retention period begins on the date when the failure is reported to the service provider, or in the absence of a service provider either one of dealer, reseller, agent, representative, importer or manufacturer. If the failed product can not be repaired within 5 workdays, the manufacturer or the importer of the item is to supply a substitute product of equivalent quality and characteristics for the end user. The substitute product shall be used by the consumer until the date the failed product is repaired.
- 4- Failures of the item within the warranty period occurring due to material defects, processing flaws, improper assembly the repair shall be conducted free of charge, i.e. no amount shall be charged under labor cost, replacement part cost or any other name whatsoever.
- 5- Free of charge full replacement of the product shall be applicable if;
 - a. Within the warranty period, if the same failure is encountered more than two times within a year from the delivery date or different failures occurring more than four times to reduce the up-time of the product.
 - b. If the failure can not be repaired within maximum service retention period,
 - c. If the failure of the item is reported to be irreparable in writing by the service provider, or in the absence of a service provider by dealer, reseller, agent, representative, importer or manufacturer.
- 6- Malfunctions of the item occurring due to use of the products for purposes other than those defined in the User Manual shall not be covered under this warranty.
- 7- Within the warranty period, no fee or amount can be charged for labor cost or under any name whatsoever for periodical maintenance works defined by the manufacturer or the importer to be conducted at service provider stations.
- 8- On any dispute related with the Warranty Certificate the end users are entitled to file applications to Ministry of Industry and Trade, General Directorate for Protection Of Consumer Rights and Competition.

EXCLUSIONS FROM COVERAGE OF WARRANTY:

The following failures are not covered under the warranty.

- 1- Failures occurring due to negligence or incompliance with the instructions and recommendations detailed on the User Manual.

- 2- Scratches and damages due to external impacts (falling, bumping, etc.) occurring after the item is delivered to the end user.
- 3- Failures due to incorrect electric installations.
- 4- If the product undergoes a repair or modification carried out by people else than EUROVAC authorized personnel or authorized service personnel. The end user must report any disputes with service providers to EUROVAC or the manufacturer by mail or phone.

General Distribution:

Post Sales Services:

EUROVAC VAKUM SAN. VE TİC. LTD. ŞTİ

Address : Dođan Araslı Cad. Ateşođlu İş Merk. No:19/A Esenyurt / İST

Tel : (0212) 596 84 25 (Pbx)

Fax : (0212) 596 45 36 10

WARRANTY

The JetLine product you have purchased is manufactured with state-of-the-art technology and is a durable product complying with all applicable requirements. To obtain the optimum benefits from the product you have purchased please read the user manual carefully and observe the instructions therein.

Please only contact our nation wide network of authorized service providers for maintenance and repair works.

This warranty certificate has been delivered with the authorization given by the Republic of Turkey, Ministry of Industry and Trade, General Directorate for Protection of Consumer Rights and Competition pursuant to Law No: 4077 and Circular TRKGM-95/116-No: 117 enacted according to the referred Law.

AUTHORIZED SIGNATORIES

General Manager

Quality Assurance manager

Address: Doğan Araslı Cad. Ateşoğlu İş Merk.
No:19/A Esenyurt / Istanbul
Phone: (0212)596 84 25(Pbx)
Fax : (0212)596 45 36

Warranty Certificate :Document ID: 042544
Registration Date : 11.Jul.2007
Title: EUROVAC VAKUM SAN. VE TİC. LTD. ŞTİ

PRODUCT DETAILS

AUTHORIZED DEALER

Product Type : Vacuum Cleaner
Brand : JetLine
Model : JT-01
Serial No :
Delivery Date and Place :
Warranty Period : 2 years
Maximum Service Retention : 30 Working Days

Title :
Adress :
Phone-Fax :
Serial No :
Invoice Date and No :
Date-Signature-Stamp :

On any discrepancies about the period of warranty the invoice date shall be taken as basis, therefore the end users are to keep the original of the warranty certificate or the invoice or legible copies of the aforementioned.

Pursuant to Article 13 of The Consumer Law; vendors, retailers, agents of representatives of the foregoing are responsible for filling out the warranty certificate and deliver the certificate to the end user purchasing the product. Warranty certificates must include the date and number of the invoice, tax label number and serial number for the product purchased.